

THE PARISH MAGAZINE

WOLVERTON, NORTON LINDSEY AND LANGLEY



November 2020

Price 50p

Rector	Rev. Richard Mutter 01789 731475 (day off Friday)	
Churchwardens	Mr Adrian Hopkinson	01926 842422
	Mrs Dorothy Mann	01789 731635
Deputy Churchwarden	Mr John Cohen	01926 842751
Treasurer	Mr Jonathan Toulmin	01789 731332
PCC Secretary	Mrs Marion Austin	01926 842661
Editor	Karin Elmhirst	07923 094513

If you need to speak to anyone about baptisms, weddings & funerals, please contact one of the Churchwardens above.

REMEMBRANCE SERVICES

Sunday 8 November

10.45 am	Norton Lindsey
10.55 am (tbc)	Wolverton
3 pm	Langley

Please could you contact the Churchwardens or Marion if you wish to join us.

CHURCHES NOW AVAILABLE FOR PRIVATE PRAYER

Holy Trinity, **Norton Lindsey** will open on **Sundays** from 9.30 am to 4.30 pm
 St. Mary the Virgin, **Wolverton**, will open on **Sundays** from 9.30 am to 4.30 pm
 St. Mary's, **Langley** will not be opening.

**Please observe the custom of sanitising with the gel provided
both going in and coming out.**

CHURCH ZOOM SERVICES - Common Worship Morning Prayer Service at 11 am on the 1st, 2nd and 3rd Sundays of the month with BCP Evensong at 6.30 pm on the 4th Sunday of the month.

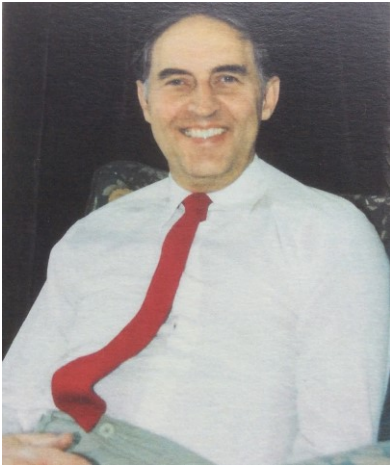
To “attend” these services contact **Celia Spiers 07710 198009**

PARISH RECORDS

7 October	Jennifer Elizabeth Gardner Interment of Ashes	Norton Lindsey
-----------	---	----------------

14 October	Kenneth Frederick Chapman Burial	Norton Lindsey
------------	--	----------------

OBITUARY - KEN CHAPMAN



Ken Chapman was born in Swadlincote, South Derbyshire on the 9 April 1936. He was educated at Woodville Infants' and Junior Schools followed by Ashby-de-la-Zouch Boys' Grammar School. He contracted polio at the age of 11 but, mercifully, was diagnosed quickly, closeted in and isolation hospital for a month and was spared any physical impairment. After 'A' levels, he served 2 years of National Service in the RAF. He was one of about 5,000 National Servicemen from all three services who were trained as translators and

assistant interpreters in Russian between 1950 and 1960. His job was to listen into and record all communications between Russian pilots and their ground control.

After demob from the RAF Ken trained as a geography teacher at Worcester College where he met Joy who qualified as a domestic science teacher. They married in Norton Lindsey Church in 1959 and first lived at Rolleston-on-Dove near Burton-on-Trent after they were both appointed to the staff of Granville School, Swadlincote. Ken became head of the geography department and subsequently was asked to head the English department. After private study, he graduated with an external BA from London University.

In 1967 the family moved to Arles Cottage, Norton Lindsey, Joy's childhood home, when Ken was appointed to the staff of Leamington

College for Boys. Later he was appointed head of geography which he served until he took early retirement in 1988.

Norton Lindsey village life was another absorbing interest to Ken. He served on the Parish Council for 13 years. Elected to the Parochial Church Council (PCC) in 1969, he served as PCC Secretary 1970-75 and was elected to Churchwarden in 1977, serving 30 years.

Conversations with old villagers, in the late 1950's and in the 1960's, led to the start of a serious study of village history. With Joy's parents, he jointly wrote a small 'History of Norton Lindsey' in 1972. After finding a copy of the Revd Theodore Shurt's 'Lindsey' in the Bodleian Library in Oxford, he published a reprint of the work with forward, notes and code. He amassed a large collection of old photographs of the village from widespread and very varied sources.



After retirement, his research time was greatly increased and he published a 'History of Norton Lindsey and District' in 1994. In 2003 he wrote a history of the Troth and Hillson Plough-making business called the 'Langley Plough' and in 2007 'Pictorial Memorials. Wolverton, Norton Lindsey and Langley Remembered'.

Ken and Joy have been members of the Warwickshire Local History Society for many years. They were regular weekly walkers with the Stratford Ramblers' Wednesday group for 20 years until 2018.

In December 2019 Ken was awarded the honour of being the first 'Honorary Freeman of the Parish of Norton Lindsey, in which he took great pride.

Ken was also a regular and long-standing contributor to the Parish Magazine for which we have been very grateful.

KEN Chapman - Linguist, geographer, archivist, historian, muniments collector, gardener, benefactor and Organist!

During Ken's funeral, his wife Joy told us about his years as organist for Holy Trinity Church. The 30 friends and church-goers in the congregation were spell-bound as Joy told the story of how she had asked Ken to help her at Sunday school. She was keen to get the children to sing and what better than to sing a few hymns. So she asked Ken, who had not played the keyboard before, to play the tune of a different hymn each week. Each week he learnt a new hymn from scratch, initially just the tune line. With the passage of time he was able to play all the hymns and psalms required in a church service, and to play them with impeccable speed. What a talent! From time to time he would find somebody to assist, but it always came back to him. Ken only played hymns. Joy hoped to hear him play piano pieces at home, but it was always preparation for a church service. He played the organ for 30 years and nobody could replace him!

Adrian Hopkinson

MESSAGE FROM JOY CHAPMAN, KAREN AND RACHEL

We would like to take this opportunity to thank everyone for their kindness and support after the very sad loss of our dearest husband, father and grandfather, Ken, on Saturday 26 September 2020. Your numerous cards, messages and phone calls have been so comforting at this difficult time for us all. We have been especially touched by the kind words and memories you all have of him, and amazed at the many cards we have received, each with very special, personal messages inside. It is wonderful to know how much Ken was loved and respected by all who knew him.

Also, a huge thank you to all those who lined the route to the church on the funeral day, it meant such a lot to the family, we can only apologise that due to the situation you were not all able to join us inside the church as Ken would have wished.

If you would like to give a donation to the Holy Trinity Church Fabric Fund in memory of Ken, please send it to AE Bennett and Sons, 24 Sheep Street, Stratford Upon Avon, Warwickshire. CV37 6EE. Cheques should be made payable to 'Wolverton, Norton Lindsey and Langley PCC'.

'PUTTING OUR CURRENT TROUBLES IN A COSMIC PERSPECTIVE'

A PERSONAL VIEW from Rev. Stig Graham, who is standing in for our Rector Richard Mutter.

At our recent Harvest Festival at St James in Snitterfield we were able to reflect on the interconnectedness of the world and the universe, of living things and all Creation.

At one end of the Science spectrum we can see 14 billion years of connectedness, resulting in our lives being dependent on material created in the Big Bang; we could see elements created in supernovae explosions enabling our existence. In a sense, in physics and cosmology, matter and materials, the Science is tightly limited by strict rules, the laws of physics.

However, with Life, still based on those simple rules, came huge and increasing complexity. Even just deciding whether something is alive or not is challenging. With life, our rules and definitions become ever more vague.

Human relationships are also highly variable and unpredictable. The science of people, at best, relies on probabilities of populations of people and it is difficult predict the behaviour or response of any given person. Science needs large numbers, sharp boundaries and few, if any, exceptions. Human life is made up of individuals, fuzzy edges and countless exceptions.

People are so diverse, physically, mentally, spiritually, psychologically, with such different histories and cultures, with multiple relationships, dependencies and responsibilities, fears and talents. Is it possible, especially in these difficult times, to help all of them, and especially those who are vulnerable?

Jesus taught two simple rules: Love God, Love your neighbour. Simple rules but still enabling a response in many different ways. As Christians, we can ask ourselves, or even better ask those we would help, what can we do, as individuals and as churches: discovering what we can offer that would be helpful to our neighbours and communities and, equally, in what ways may we avoid causing hurt, illness and pain to those around us.

The Rev. Stig Graham

MONTHLY READINGS AND COLLECTS

1st November All Saints Sunday

Readings: Ps 34: 1 - 10; Rev 7 : 9 – end; 1 John 3 : 1 – 3; Matt 5 : 1 - 12

Almighty God, you have knit together your elect in one communion and fellowship in the mystical body of your Son Christ our Lord: grant us grace so to follow your blessed saints in all virtuous and godly living that we may come to those inexpressible joys that you have prepared for those who truly love you; through Jesus Christ your Son our Lord, who is alive and reigns with you, in the unity of the Holy Spirit, one God, now and for ever. **Amen.**

8th November Remembrance Sunday / Third before Advent

Readings: Ps 70; Amos 5: 18 - 24; 1 Thess 4: 1 - 5, 13 - end; Matt 25 : 1- 13

Almighty God, from whom all thoughts of truth and peace proceed; kindle, we pray, in the hearts of all, the true love of peace and guide with your pure and peaceable wisdom those who take counsel for the nations of the earth that in tranquillity your kingdom may go forward, till the earth is filled with the knowledge of your love through Jesus Christ your Son our Lord, who is alive and reigns with you, in the unity of the Holy Spirit, one God, now and for ever. **Amen.**

15th November Second Sunday before Advent

Readings: Ps 90:1 - 8; Zeph 1 : 7, 12 - end; 1 Thess 5 : 1 - 11; Matt 25 : 14 - 30

Heavenly Father, whose blessed Son was revealed to destroy the works of the devil and to make us the children of God and heirs of eternal life: grant that we, having this hope, may purify ourselves even as he is pure; that when he shall appear in power and great glory we may be made like him in his eternal and glorious kingdom; where he is alive and reigns with you, in the unity of the Holy Spirit, one God, now and for ever. **Amen.**

22nd November Christ the King / Sunday next before Advent

Readings: Ps 95: 1 - 7; Ezek 34 : 11 -16, 20 - 24; Eph 1 : 15 - end; Matt 25: 31- end

Eternal Father, whose Son Jesus Christ ascended to the throne of heaven that he might rule over all things as Lord and King: keep the Church in the unity of the Spirit and in the bond of peace and bring the whole created order to worship at his feet; who is alive and reigns with you, in the unity of the Holy Spirit, one God, now and for ever. **Amen.**

29th November Advent Sunday

Readings: Ps 80 : 1 – 8; Isa 64 : 1 – 9; 1 Cor 1 : 3 – 9; Mark 1 : 9 – 13

Almighty God, give us grace to cast away the works of darkness and to put on the armour of light, now in the time of this mortal life, in which your Son Jesus Christ came to us in great humility; that on the last day, when he shall come again in his glorious majesty to judge the living and the dead, we may rise to the life immortal; through him who is alive and reigns with you, in the unity of the Holy Spirit, one God now and for ever. **Amen.**

RECIPE – CASSIS AND BAKED PEARS WITH BLACKBERRIES

Serves 3- 4

Ingredients

6 just-ripe pears
3½ fl oz cassis
½ pint red wine
2½ oz caster sugar
5½ oz blackberries



Method

- Pre -heat oven to 180°C.
- Halve pears, core them and put them cut sides up in a heat proof dish.
- Pour the cassis and red wine over the pears, sprinkle with sugar.
- Bake – spooning the juices over the pears from time to time until the fruits are tender and turn the pears during cooking.
- The juices around the pears should be syrupy.
- If not bring the juices to the boil and leave to cool.
- Add the berries about 30 minutes before you want to serve. This is best done the day before.

LIBRARIES

Reopening Library Services

A new ‘Grab and Go’ service is available at selected libraries. Spend up to 30 minutes to browse the shelves, return items, collect requests, borrow books and use pre-booked computers. Some libraries will continue to offer a Click & Collect service with the aim of opening for Grab & Go soon.

You may have to wait a short time before entering. A limited number of people are allowed in the library at any one time. Visits are limited to 30 minutes.

All visitors should wear a face covering, sanitise their hands, and provide contact information for NHS Test & Trace on entry. Please do not visit the library if you have any symptoms of coronavirus.

Click and Collect Services

Items can be selected from the Click and Collect page:

warwickshire.gov.uk/libraryclickandcollect

LANGLEY NEWS

Langley Parish Council held its quarterly meeting last month and amongst items discussed were;

- A report of a blockage of the stream below the ford which can cause back up in heavy rain. This will be investigated.
- There was dismay that Langley's 5 year plan had been acknowledged but 'lost' at Stratford District Council, such that it had never been registered. Ian Shenton will provide a PDF copy to enable registration to be made. An update is required in any case, but to await details in the imminent White Paper and availability of a 'template' for Community Plans.
- A road dip below Skew Bridge on Langley Road has had casualties again in recent heavy rain. The manhole needs to be changed to a drain, Warwickshire Highways is to attend shortly.
- Andy Edwards was thanked for his follow up work with Broadband. All properties north of Ford Lane railway bridge now have access. No plans available yet for properties south of the bridge, residents are making their own plans. Andy was also thanked for his installation of 'Village Maps', one below Harrow Hill and another on Ford Lane near the bridge. Delivery drivers in particular, an increasing number, were grateful, as were some residents tired of drivers knocking on their doors to ask for directions.
- Hill Farm Barn Conversion had been withdrawn.
- Dates for the 2021 meetings were agreed.

Brian Keefe

NORTON LINDSEY PARISH COUNCIL REPORT - OCTOBER

Norton Lindsey Parish Council (NLPC) met on 13 October, via Zoom.

One minutes silence was held for Ken Chapman whom sadly passed away on 26 September.

We received a representation from a resident, during the public forum, about rewilding verges. This entails planting areas with native flower species to encourage insects, etc. NLPC is keen to facilitate the rewilding of areas of the parish and thought that part of Millennium Green and the common land by the Stanks Horse Trough could be seeded. Further information is given in the Nature Notes in this issue of the Parish Magazine.

We are sorry to have to report that one of our Councillors, Frances Goossens, has resigned due to personal reasons. This means that there will be a Casual Vacancy and the process around this will be made available on parish noticeboards and on our website, in due course.

We shall produce an Annual Report/Parish Update for residents of the parish in advance of the virtual Parish Assembly on 10 November. Please watch out for this landing on your doorstep.

Further policy document updates were agreed. For those interested, these can be viewed on our NLPC website, www.nortonlindseypc.org

After attending a Warwickshire & West Midlands Association of Local Councils (WALC) discussion on local government reform in Warwickshire, Cllrs Neil Brown and Martin Neale, gave an update on the proposals. As mentioned in last month's Summary Report, a Unitary local government could mean that the six councils in Warwickshire are reduced to one (or two) councils delivering all services. Warwickshire County Council (WCC) prefers the route of a single authority and we are expecting Warwick District Council to propose two districts – north and south. WCC is keen on a unitary authority devolving power to town and parish councils, which will be accompanied by funding. It was noted that once the proposals are complete, they will go out for full consultation.

WCC Cllr Les Caborn gave an update on the latest development of the Unitary local government proposals namely that things were on hold for Warwickshire as Covid-19 has slowed down the process. Warwickshire is therefore in a queue for consideration. Cllr Caborn also advised that Lower Norton's residents had been

sent details of the proposed improvements for Norton Curlieu Lane. And finally, as the rate of Covid-19 is rising in the county, three instant management teams have been set up in North Warwickshire, Rugby and South Warwickshire.

This report is a summary of the meeting and full minutes of the meeting will be available on our website at <https://nortonlindseypc.org/parish-council-meetings/minutes-of-previous-meetings/> or from the Clerk.

The next meeting will take place on 10 November, which will be preceded by a virtual Parish Assembly, at 7 pm. Details of the Parish Assembly (annual open meeting), where people of the Parish are invited to join us, will be made available shortly on our parish noticeboards, on our website and via the Annual Report/Parish Update.

Karin Elmhirst

Norton Lindsey Parish Council GRANTS

Norton Lindsey Parish Council (NLPC) has the power to award grants to local clubs, groups and organisations which, in its opinion, directly benefit the Parish or residents of the Parish.

Earlier this year, NLPC changed its procedure for awarding grants to parish organisations.

The new procedure is set out in the Grants policy which is available on the website (www.nortonlindseypc.org) or from the Clerk. In this current financial year, all grant applications must be received by 31 January 2021 and applications will be considered at the ordinary Parish Council meeting in February 2021.

The Clerk or the Parish Councillors will be happy to offer informal advice, without commitment, at any time.

All applications for grants must be made by completing the Grant Application Form (available on the website or from the Clerk) and returning it by email to nortonlindseypc@outlook.com or by post to Jennifer Bendall, Clerk, Norton Lindsey Parish Council, 7 Brick Kiln Close, Norton Lindsey, Warwick, CV35 8DL.

CHARITY CARD SALE

Due to Covid-19 we will not be holding a charity card sale and soup lunch this year.

Many of the charities which have a table at the sale have shops locally where you could purchase cards if you wish to. They also have online shops if you look on their websites.

However, RNLI do not have inland shops. If you would like to support RNLI by buying their cards, please let me know and I can put you in touch with Jackie, who runs the sales table every year at the card sale, and lives locally. I also have a PDF of the card and calendar designs which I can forward to you if you contact me.

Gillian Henson 01926 842300

VILLAGE RAMBLE

What a shame!! We returned in September for our first ramble in six months but with renewed Covid-19 restrictions it is not possible at this time to organise anything further.

I look forward to the day when we can re-start again and life returns to normal. In the meantime if anyone would like a copy of the 12 local walks I have put together or any of the previous ramble routes, then please mail me.

Regards
Graham Lewis

Email - graham-lewis1@hotmail.co.uk
Mobile - 07850/847662

ASSOCIATED COUNTRYWOMEN OF THE WORLD

Women Walk the World
20 mile sponsored walk

Thank you so very much to
everyone who supported this
event on 14 October.



The weather was perfect for
walking.....and the response was
magnificent.

At the time of writing, there
is no final total but over
£1,100 has been raised to
help women across the less
developed world.



Thank you everyone.
Julie Howard

Well done Julie



FREE ESTIMATES

Private and Commercial work undertaken
All aspects of interior and exterior decoration covered
including coving and some bravura finishes
References if required

A R Wyatt Painter & Decorator **Quality Painting and decorating**

Over 40 years' experience

Mobile: 07961 902706

Home: 01926 420612

DEADLINE

FOR CONTRIBUTIONS TO THE
NOVEMBER 2020
PARISH MAGAZINE IS:

TUESDAY 15 OCTOBER

***Articles will NOT be accepted after this date, except with prior
arrangement with the Editor***

NEW EDITOR: karin.elmhirst@icloud.com

No Time to Iron

Call Sue on **07879 695322** or **01789 205826**

Will Collect and Deliver (£2.50 Local Area)
One-Off Loads Welcome!

**£11.00 per hour –
call anytime**



NORTON LINDSEY VILLAGE HALL UPDATE

As I write this, it is almost a year since the Hall reopened! The ribbon was cut by the most senior of our residents, Ken Chapman and the most junior, Felicity Davies.

We would like to pay tribute to Ken for his outstanding contributions to the Village. I think I would be right in saying that the Opening of the Hall would have been one of the last of his public engagements.

Looking back over the year, the Hall steadily became booked with classes and most weekends there was at least one children's party. The Sniffers had several events and were just about to hold another one, which would have raised funds for the stage curtains, that was cancelled due to Covid-19. We also had a few cinema afternoons and evenings.

For me, the highlight of that first 6 months was the concert performed by Tarantara. The Hall was packed to full capacity with members of the Choir commenting how friendly and welcoming the atmosphere was and how this enhanced their performance.

Then came lockdown and we had to close, reopening in September in a limited capacity. We obviously do not know how long this situation will continue and just have to do our best to keep the Hall open within GOV.UK guidelines to keep everyone safe. Happily we received a £10,000 grant from WDC so if we are closed our running costs are covered for a good number of years.

The Hall continues to be open for classes and we are nearly at the point at which the income from these covers the running cost of the Hall. Although we cannot have indoor social events, we held a successful Picnic in the Park event and also the Scarecrow competition, both being outdoors making them permissible, possible and safe. See Jose Freeman's article for more on the Scarecrow competition, which we hope to repeat next year.

The next event which we are planning will be The Best Decorated Hedge or Tree in the Village, all about Christmas of course.

In the past month we had a snagging meeting with the supplier of the timber building and builder to identify any problems with the building and apart from the usual settlement cracks there were few problems. The issue of the oversensitive alarm sensors, being set off by things like deer outside, was resolved by

replacements which work on microwaves, the cost being born by the installer of the alarm.

As Trustees, we continue to meet on Zoom. I also attend regular Zoom conferences, organised by WRCC (Warwickshire Rural County Council), to keep myself updated on changes in legislation and how it affects Village Halls specifically. I have the opportunity to hear how other Village Halls in South Warwickshire are managing and to exchange ideas.

We decided, in view of the current restrictions, to defer the AGM until the spring. The accounts will be published on the website.

I would like to end this update by asking if anyone reading this might be interested in either joining us as a Trustee and or be interested in taking on the role of Secretary. Carole Briggs had very kindly agreed to stay on and we would normally be asking this at the AGM, so I thought I would pop it in here. If you would like to informally enquire about this or about becoming a Trustee, do please contact us.

We would also like to plug the 100 Club, prizes to be won, so if you aren't in it you'll not win it. And you will be helping to raise funds for the Hall.

Anna Mace-Leska, Chair of Trustees and Playing Fields CIO

NORTON LINDSEY VILLAGE HALL 100 CLUB

September Winners

1st prize - Number 3 - Ruth Barbour £75

2nd prize - Number 60 - Rosemarie Perry
£25

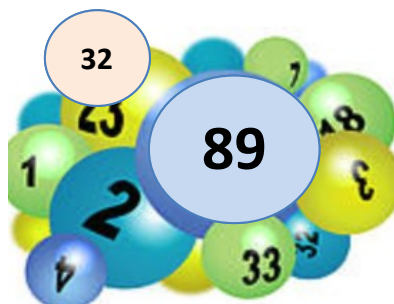
October Winners

1st prize - Number 89 - Rachel Davies £75

2nd prize - Number 32 - Hugh Gilmore £25

We still have some numbers available for this year - why not join the list of winners!

Contact Carole Briggs on 01926 843355



VILLAGE SCARECROW COMPETITION



Sunday, 20 September dawned sunny and bright; there was an air of sleepiness and calm in Norton Lindsey – but as folk drew back their curtains and looked, bleary-eyed, out their bedroom windows, they discovered something rather peculiar had happened overnight.....

15 handsome Scarecrows had arrived and taken up residence in the village!

All based around the theme of ‘Heroes’ there was Fireman Sam, complete with helmet and fire hose; a Super Nurse in full uniform & PPE (with a very short skirt, showing straw legs to the world!). There was Captain Tom and Del Boys’ Batman with flowing cape; a ‘Local Farmer Hero; a beloved ‘Terrific Teacher’; Farmer Bill’s Cowman; Dr Norton had arrived, together with a Hero Builder and Supertato; ‘The Nation’s Hero’; Postman Pete; Farmer George; Super Scarecrow and Farmer Mann Feeding the Nation.

Wow! What a sight to behold! Where had they all come from? Why had they come to Norton Lindsey? Was it a Scarecrow invasion? Were they friendly? Did the authorities know?

The answer of course is that they were each made by Norton Lindsey residents and entered into our very first Village Scarecrow Competition.

In all, 33 individuals, aged between 2 and ‘very, very old’ (!!) had given birth to these 15 wonderful creations. Well done to you all and thank you for participating.

Villagers could be seen walking (suitably socially distanced!) around Norton Lindsey throughout the day, laughing, smiling, chatting, pointing at, and feasting their eyes on these ‘Straw-Men’ (and Straw-Women!). The variety on offer was astounding: some had buttons made of acorns; others had conkers for eyes, carrot noses, turnip heads – and much, much more. And of course, there was plenty of straw!

Pleasingly, our Scarecrow friends didn’t desert us at the end of Sunday, nor did they fly away (there was a worrying moment the day before when it became rather windy and we

feared some might become airborne!), but most stayed on view for a few days, giving residents and visitors much pleasure.

In truth, every entry deserved a prize, but in a competition, it unfortunately doesn't work like that. The judges took lots of things into consideration – including creativity and ingenuity; use of straw, 'scariness'; use of props, PPE, natural materials etc. Hardest of all, was to evaluate the merits of creations made by toddlers and the very young, who might, just might, have had a teeny weeny bit of help from Mum and Dad!

After much consideration and debate, winners were named as:

Age 12 and under

1st PRIZE – Charlotte and Elliot Brown for 'Fireman Sam- the Hay-ro Next Door'

2nd PRIZE - Henry and Jack Mann for 'Farmer Bill's Cowman'

3rd PRIZE – Evelyn and Anna Range for 'Dr Norton Hero'

Highly Commended – Anna Mitchell for 'Terrific Teacher'

Highly Commended – James and Sophie Blackman for 'Hero Builder'

Highly Commended – Harrison and Bronte Bryce for 'Super Scarecrow'

Age 13 and over

1st PRIZE – Anne and Richard Cooke for 'Super Nurse'

2nd PRIZE – Kate, Chris, Sophie and Emily Butler for 'Postman Pete'

3rd PRIZE – Lyn Parsons, Elaine Buckingham, Fiona Lane, Virginia Woolgar & Mike for 'Nation's Hero'

Highly Commended – Mary and Mike Butler for 'Farmer George'



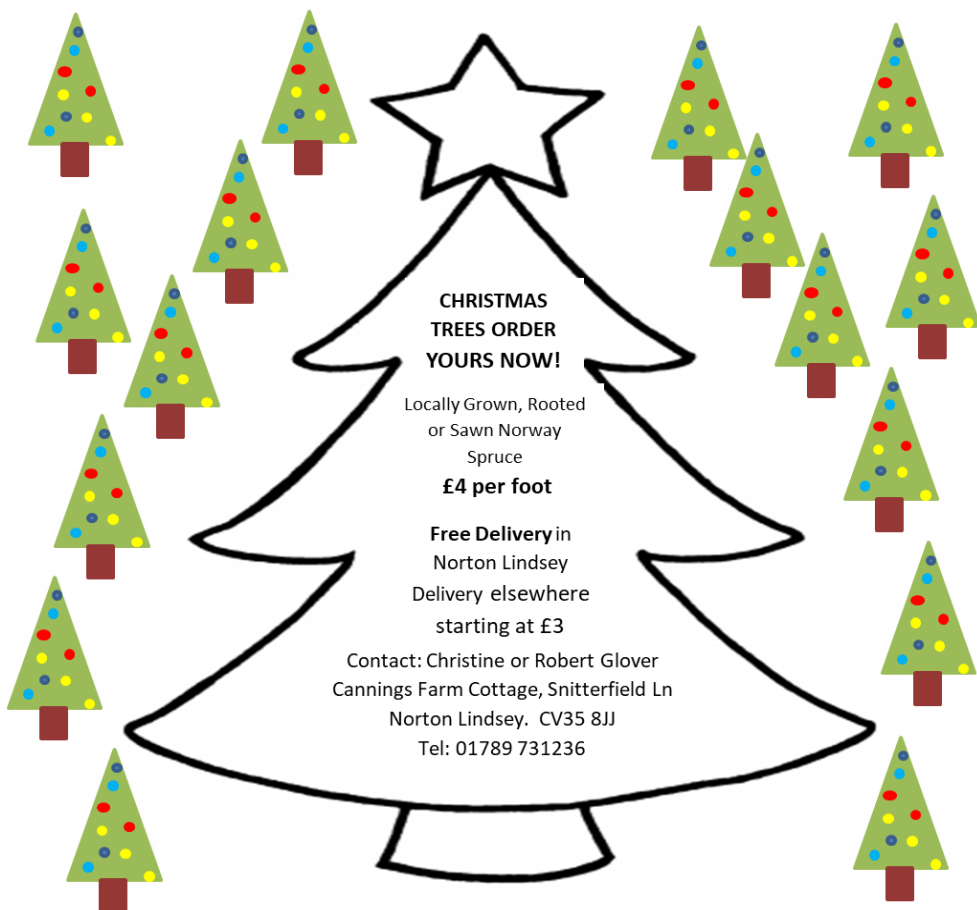
PRIZES have been awarded: Book Tokens to the value of: 1st prize £30, 2nd prize £20 and 3rd prize £10.

Feedback from villagers has been resoundingly positive. It seems like this will become an annual event, so get thinking about your Scarecrow creation for 2021! Next year, we may very well extend the age categories to embrace those of you who are a little closer to 'pensioner' than 'teenager'!

The event was organised by all the Trustees of the Village Hall CIO and my thanks to everyone who contributed to what was such an enjoyable day for the whole village.

Jose Freedman
Trustee

CANNINGS FARM CHRISTMAS TREES – NORTON LINDSEY



Majestic Dance Club

I am a teacher with the long established Majestic Dance Club in Warwick. From the end of this month, we are moving some of our dance classes from our usual location in Warwick to Norton Lindsey Village Hall and will be running a Beginners Social Dance Class from Sunday 4 October evenings from 7.30pm - 8.15pm. Below is a link to our website with further details.

<http://majesticdance.co.uk>

All our dance exercise classes will be carefully run in line with all the government regulations and IDTA (International Dance Teachers Association) Covid-19 free requirements and guidelines. I am happy to take calls or emails from anyone who might be interested.

Greta Needham

Email: agneedham50@gmail.com

Mobile: 07718139983

FUTURE PUBLICATIONS OF THE PARISH MAGAZINE



Please note that it is possible future publications of the Parish Magazine may have to be online. If you would like to receive a notification email, to say that it is available and where to find it, please send your email address to Karin.elmhirst@icloud.com.

If you have missed editions of the Parish Magazine during lockdown, you can find all issues, from April 2020 onwards, on the Norton

Lindsey Parish Council website at <https://nortonlindsey.org/parish-publications/parish-magazine/>.

Professional Carpet and Upholstery Cleaning

- ◆ Domestic and Commercial
- ◆ Fully insured and accredited
- ◆ Local family owned business



Odour Removal



Stain Removal



End of Tenancy



Protection Treatment

Get in touch for a free, no obligation quotation

M: 07713 618133 T: 01926 493151 E: info@fresherfloors.co.uk

www.fresherfloors.co.uk

Follow us



FresherFloors

A D MULLAN

PLUMBING, HEATING & SMALL BUILDING WORKS CONTRACTOR

Ardencote, New Road, Norton Lindsey, Warwick, CV35 8JB

Local, reliable and trustworthy plumber & small works contractor
with over 30 years' experience

All aspects of building works considered

Quotes supplied **No call out charges**

Contact: Andrew Mullan

Home: 01926 842616

Mobile: 07778 558893

E-Mail: Andrew.mullan@yahoo.co.uk



Established 1985

NATURE NOTES – REWILDING an introduction

*“Let’s call the bees the canaries
And the World the coalmine
And we can be the miners...”*

For the purpose of this article, rewilding means “to restore the land to its natural state”. The full definition is large scale conservation aimed at major restoration of lost habitats and reintroducing apex predators such as wolves!



As part of the Parish Council Action Plan and in line with Warwickshire DC policies, it was decided to conduct a biodiversity audit of the Parish and to consider re-wilding some road side verges within the Parish. The audit came to a halt due to Covid-19 but there is no reason to not go ahead with considering some re-wilding of verges.

Indeed, this occurred naturally in spring and early summer within some of the verges as the Council did not cut the grass. A succession of wild flowers sprung up amongst the grass as described in the May 2020 article. I saw many more pollinators on these flowers than are normally seen in verges and also, due to very low levels of car traffic, birds flitting in the verges and feasting on seeds and insects.

Rewilding may seem like a scary notion but it is vital as part of the plan to combat climate change and reduce the increasing decline in insects and

mammals throughout the world. A recent study has shown that rewilded land can increase by 30% the absorption of CO2 emissions.

Notions of rewilding may lead us to think, too big a project for me or leave that for people who have land or someone else will do it. But if we can all play a small part in this our collective efforts will make a contribution and Langley have made a start. And for the past few years in the Churchyard in Norton Lindsey, the mowers have allowed wildflowers to thrive in some areas.



You will be used to me writing about why we need to have pollinator friendly plants in our garden and allowing a bit of untidiness in our gardens providing natural habitats for insects, birds and mammals. We have many green verges in the Village, largely sterile and devoid of plant and insect life and some of these can be rewilded safely without affecting visibility. An example is the small area on the corner of Morgan Close and Curlieu Lane. Packed with colourful flowers, and delightful to behold. Clearly this piece of land had wild and cultivated flowers sewn into bare soil and that is one way of achieving a swathe of wild flowers. If there is existing grass present this is only possible in small, managed areas and one family in Norton Lindsey are going to be doing this in front of their house.

The other way of doing it is allowing nature take its course as mentioned above. I have also done something similar with my front lawn, allowing seeds naturally in the ground to take hold and thrive. Whichever method is used, it does have to be managed by cutting at the end of summer and removing clippings. Pioneer species of trees may also spring up, such as birch, which would have to be removed from verges.



As a Parish Council, we have identified two areas where we will make a start in early next year, one of which is our own back yard, part of the Millennium

Green, which we own.

In doing some research for this article, I came across some interesting articles online. One of them was about the need to rewild ourselves in our own minds in, order to change our mindset of needing neat and tidy. The suggestion was to really get in touch with nature and the wild world, in a way which was not sentimental. For example, marvelling at the sparrowhawk who swoops and has a collared dove for breakfast - as witnessed by me in my own garden.

Simply put rewilding is people reconnecting with the wonder of nature and encouraging a balance between people and the rest of nature where each can thrive for long term benefits. Let's think about making a start and if you would like to consider rewilding a bit of your front garden or verge, please look at www.rewildingbritain.org and www.plantlife.org and watch this space.

I will end this article by quoting Sir David Attenborough "The living world is our unique marvel. The natural world is fading."

Anna Mace-Leska

PAWSITIVE Results

Specialising in canine muscular therapy, behaviour and training

Treating dogs suffering from:
Arthritis; Lameness; Joint Pain; Post-Operative recuperation;
Muscular Issues; Behaviour and training problems

We also work with sporting and working dogs, offering muscle balance assessments, massage treatments and pre and post activity and training advice

Regular canine first aid and behaviour/muscle therapy workshops

Contact: 07538 818685 or caroline.tunbridge@caninetherapy.co.uk
www.pawsitive-results.co.uk



VISITING QUALIFIED CHIROPODIST

Mrs L Hemmings MSSCh, MBChA, DipPodMed

Registered with the Health Professions Council

Tel: 01564 784466

NiCEIC
Domestic Installer - H.J.Cleal

Electrical Services

*Domestic, Industrial,
Agricultural,
Repairs and Installations*

**Tel 01926 315638
and 07816 232108**

**ADVERTISE YOUR BUSINESS
WITH THIS PARISH MAGAZINE**

Do you know anyone who would
like to advertise with us
for as little as £6 for a quarter page
each month?

All proceeds to Church Funds

Email me:
karin.elmhirst@icloud.com
or ring or text me on
07923 094513

NEED HELP WITH THE GARDEN?

Hedges Trimmed
Grass Cut
Garden Tidy Up

NO JOB TOO BIG OR TOO SMALL

Call Nathan 07963 742869



by Craftsman Charles Barnett
in Stratford-upon-Avon

- French & Wax Polishing
- Desks Re-Leathered
- Brass Polishing
- Furniture Stripped
- Locks opened & keys cut
- Insurance work a speciality
- Modern Spray Finishing

Mobile: 07792 423343

Email chasbar@onetel.com

Norton Lindsey and surrounding villages



As well as offering a dog walking service, I can also visit your pets in your own home to feed them, clean them out or even just keep them company for an hour or so if you're going on holiday, or having a long day or weekend away.

Please feel free to give me a call to discuss your needs.

Fully insured, references available



Walk The Dog
and feed the cat, too!

Jenny Bendall

7 Brick Kiln Close, Norton Lindsey, Warwick, CV35 8DL

Tel: 01926 843534 / 07814 239244

Email: walkdog-feedcat@outlook.com

Why not advertise in this magazine for a small donation to VERY MUCH NEEDED church funds???

Sell your unwanted items in the Parish Magazine.
We reach approximately 350 houses in the area!

Email karin.elmhirst@icloud.com

or ring 07923 094513



COUNTY COUNCILLOR REPORT - OCTOBER 2020

The County Council held a special meeting to debate a report from PWC making the case for a single unitary (combining County and District Councils into one council, parishes would be unaffected). Before the meeting Councillors were also sent a copy of a report commissioned by the District Councils from Deloitte recommending two unitaries.

There was consensus in the chamber that the current system of three tier local government could be improved and after a long debate the Council voted to send the PWC report to the Minister and invited the Districts to submit their Deloitte report as well. It appears that the Government has now pulled back from pushing ahead with wholesale reform of Local Government due to the continuing epidemic, but may or may not consider ad hoc requests for unitary status depending who you speak to.

One way to compare Councils is the expenditure divided by the number of councillors. This gives an indication of the capacity to scrutinise officers. In the County there is one councillor for £11 million expenditure, the average for District Councils (DCs) in Warwickshire is one councillor per £386,000. Stratford is highest with one councillor per £450,000 expenditure, but the Leader of Stratford DC has said that more District Councillors are needed due to excessive work load.

I have often referred to the cost of social care and in last year's accounts when the costs of shared services such as HR and Finance are allocated to delivery lines Warwickshire spent 75% of its budget on Children, Adult Care and Public Health. This does not include the cost of schools funding which is a pass through from Westminster. For the County and District combined accounts this social care drops to 67% of the budget. Just under 3% of the population benefit from social care support.

The two counties that became unitary last year were Northamptonshire and Buckinghamshire. Northants is forming two unitaries and Bucks has formed into one unitary. Bucks is very similar to Warwickshire in population. The two unitaries in Northants have yet to decide how many councillors they will have. Under the Bucks model Warwickshire would have 171 councillors, or 3 per County Division.

I am supporting a single unitary with 171 councillors and to run social care services on a county wide basis. However I am lobbying for the remaining 30% of the budget to be allocated on a per capita basis to a series of area boards to ensure

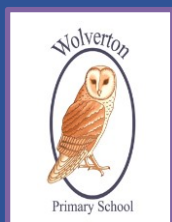
funding is allocated appropriate to the particular area. I would envisage Arden Division being part of a Green Belt area board.

The October Arden Clerks and Chairs meeting will receive a briefing from the Police on the Rural Crime unit and the regular Alcester North Safer Neighbourhood Team update. A discussion will be held with head of engineering delivery at the County on joint working with parishes. Proposals will be reviewed for parish funded additional uniformed security presence to enforce and prosecute speeding and ASB, and the use of private contractors for gritting village and town roads not covered in the County Council gritting programme.

I am sorry to report that MP Nadhim Zahawi has been unable to persuade the County to allow parish funded average speed cameras for speed enforcement.

John Horner, Tel. 01926 842068

Wolverton Primary School



Wolverton Primary School

Norton Lindsey, Warwick, CV35 8JN

Tel: 01926 842214

Email: admin5201@welearn365.com

**“...a friendly and harmonious village school with a genuine family feel.”
Ofsted 2017**

We are starting to prepare for admissions to Reception in September 2021.

If you have a child that is due to start school in September 2021 and you would like to visit the school, please contact us either via email or telephone and we can arrange a visit.

Unfortunately, due to Covid-19 restrictions we are unable to conduct tours during the school day but are more than happy to arrange a visit after 3.30 pm on a Monday, Tuesday or Thursday. During the visit you will be able to meet with the Reception teacher,

Mrs Yvette Horton and chat to our Head,

Mrs Marjorie Dean.

We look forward to welcoming you to our school.

the Newinn

Great pub
food

NEW
OPENING
TIMES
ON OUR
WEBSITE

Now open 7 days!!

Food is served 5 days

COME AND JOIN US AT WARWICKSHIRE'S FIRST COMMUNITY OWNED PUB-BRING YOUR FRIENDS AND FAMILY!

We are so grateful for your support and look forward to welcoming you into our happy and safe pub.

Thank You for Your Support!

DANNY AND THE TEAM LOOK FORWARD TO SEEING YOU SOON

The New Inn, Main Street, Norton Lindsey CV35 8JA
01926 258411 | contact@thenewinn.pub
Warwickshire's first community-owned pub
Established 1750 | Re-established 2016
thenewinn.pub | [/thenewinn/](https://www.facebook.com/thenewinn/)

Heart of England Farms



Festive flavour to savour



Locally reared, free range Christmas
Bronze and White turkeys, Cockerels,
Geese and Ducks.

Heart of England Farms have been rearing christmas poultry for over 30 years.

Specialising in free range bronze turkeys, cockerels, white turkeys and geese we can offer something to keep every tastebud happy! With sizes ranging from smaller 3kg cockerels to beautiful 11kg+ turkeys, whatever the size of your gathering we have the ideal solution.

After spending so long apart during 2020 Christmas is a time to be together. An ideal opportunity to put those new found cooking skills to the test perhaps!

Our bronze turkeys have free range in open fields, the perimeter fence is to keep the wily fox out rather than the birds in! The geese wander at will being allowed acres of space for grazing, and our cockerels and ducks are allowed the time to reach maturity resulting in the tastiest birds ever!

For prices and ordering please visit our website, however for any individual questions do not hesitate to give us a call. Collection days are the 23rd and 24th December or delivery can be arranged as required.

www.heartofenglandfarms.com

Be together this Christmas

01926 843460

Henley Road, Claverdon, CV35 8PS

L. Brooke Joynson
Cabinet Maker & Joiner

All aspects of woodworking undertaken

General Joinery & Carpentry
Antiques & Architectural Antiques
Furniture Restoration
Wooden floors supplied and fitted

Call 01926 842547 or 07909 901989



Happy Feet

Registered
Foot Care
Specialist



- | Toe nail cut
- | Corns
- | Verrucas
- | Ingrown toe nails
- | Hard dry skin
- | Fungal nails

Home appointments

07842 266575

www.happyfeetmidlands.com

**BURTON FARM, STRATFORD ON AVON
& PRINCES DRIVE, LEAMINGTON SPA
RECYCLING CENTRES**

Restricted re-opening

You can now book appointments to visit these recycling centres. The slots are only for essential visits, with one visit per fortnight. Please carefully read the information in the booking process.

Both sites currently has limited availability. If you are unable to book a time slot, check again tomorrow.

Cars that turn up on the day without a booking will be turned away.

Check the website for the latest information

<https://www.warwickshire.gov.uk/contactusrecyclingandwaste>



**AGM and Make a sustainable
Christmas Tree / Decoration
WI online Zoom Meeting**
on Wednesday, 11 November 2020 at 7.30pm

‘Women Walk the World’



Congratulations to Julie who walked 20 miles (around the village track 9 times) on 14 October to support the Associated Country Women of the World (ACWW) and raised over £1,000. You may have seen her? Gillian provided a Hub for supporters to meet, donate and cheer

Julie on. Even a few passing van drivers, cyclists and hikers stopped to find out what the event was about and to offer their donations. What a fabulous achievement Julie and such a deserving cause. Well done!

Everyone’s support was very much ☺ appreciated.

www.acww.org.uk/juliehoward.html

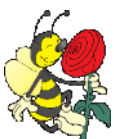


We had a fabulous turn out to our October WI Meeting on Zoom with two new members joining us, having taken up our new offer:-

‘Try the WI’ Taster membership, £10.75 to the end of March 2021.

(Full details are on page 34)

Looking for friendship? Ladies, why not join our fellowship of over 200,000 women in the WI nationally and be part of our success story! We’re looking forward to meeting you and sharing our fun with you.



As part of our support of the WI resolutions, we have launched our new **Big Bee Rescue Competition** with members, encouraging them to create a bee friendly area in their garden that will flourish throughout 2021.



At our October meeting, Lucy Morgans, a local Travel Counsellor, informed us about her experiences during 32 years of working in the Travel industry, taking us from the days of displaying heavy holiday brochures at Pickfords Travel back in 1988 and queues of people eagerly waiting to book their adventures or package holidays, through a great deal of changes and drama's including ash clouds; the demise of Monarch and the recent Covid-19 restrictions. She described some of her personal favourite destinations including the fabulous white sandy beaches of La Digue Island in the Seychelles, The Maldives and the amazing safari's and wildlife she experienced when visiting the Treetops Hotel (on stilts) in Averdare National Park in Kenya. Thailand, Malaysia, Borneo and Venice also featured in her incredible locations to visit. She certainly inspired us to dream of some far away destinations as well as some fabulous UK resorts.

Christmas is on its way and after our November AGM, we shall enjoy a demonstration of how to make a spectacular sustainable Christmas Tree and decorations you can use indoors or outside, just in time for the Festive Season. Use natural materials collected from your garden or the countryside to make your decorations stand out from the crowd.



Our WI meetings will be held on 'Zoom' through to March 2021. If you would like further information about Norton Lindsey WI, please take a look online: www.nlwi.org.uk and contact us.



Sue Steel



Why not try NORTON LINDSEY WI
with a Membership Taster?
(Membership to 31st Mar 2021 £10.75)

To find out more contact Gill
secretary@nlwi.org.uk / 07909893516

We meet on Zoom on the 2nd Wednesday of every month



"One of the best things I ever did was joining the WI. I've made so many new friends and enjoyed great times, laughing and learning new things along the way!"
Now is a great time to find out why 206,000 women are WI members.

During the Covid-19 crisis we are still enjoying a huge variety of activities including online Zoom meetings, talks and demos, photography, Tai Chi and lots of baking and making!

theWI
INSPIRING WOMEN

Report for October 2020

Wolverton Parish Council hasn't a great deal to report since last month. We certainly haven't sought to compete with the glamorous produce of Langley or the scary crow-botherers of Norton Lindsey!

However, as an electronically literate lot, we were grateful to those parishioners who were able to attend our special meeting by Zoom to discuss the planning application at Bonnyton. Having Parishioners' views greatly helps us to have a richer debate and to make better decisions, so please make time to look on our meetings in the future. Details of how to get involved can be found through the Parish website.

On the subject of getting involved, the Parish *WhatsApp* group remains a good source of important information (including on where to find windfall apples) and we intend to keep it going as the current difficult circumstances persist. Contact Stuart Easterbrook for details.

Looking further into the future, we are looking to unveil the findings of the Parish Survey: as we are still precluded from holding meetings in person, it's entirely possible that this will also need to be done by Zoom. Sue Murphy is working hard on the next steps and will be grateful for any help parishioners can give in bringing plans to fruition.

The minutes of our meetings are, as ever, on the noticeboards. However, since "winter draws on", reading them on the Wolverton Parish Council website (www.wolvertonpc.org.uk) remains a more tempting prospect. Councillors' contact details can be found there too. If you haven't yet worked your way through the masses of interesting things (and the existing Parish Plan) on the website, then what better opportunity can there be but to do so while you are there? You might even reward yourself with a small drink for doing so....

James Wynn-Evans

The Norton Lindsey **Stilton Sniffers**

The final total for the Balloon Race has allowed us to give £2,500 to Welcombe Hills School and The Shakespeare Hospice, prizes are currently being distributed to the winners, the first prize was won by a supporter in Australia, who very kindly donated the cash element of their prize to the causes and gave the Chauffeur driven restaurant dinner to his grandmother.

We would like to once again thank all of our supporters, sponsors and ballooners!

With Christmas coming and the Covid-19 restrictions as they are likely to be, we are hoping to present an online carol, with a choir of fine voices combining to delight the senses. This, together with a draw will hopefully allow us to continue our support of the Warwickshire Young Carers.

Like many charities and organisations the Young Carers are struggling to continue their amazing work with children and young adults throughout Warwickshire.

Tim Landreth



GN FORESTRY SERVICES

Glen Nicholds

Mob : 07802 839885

All aspects of tree surgery and forestry work carried out. Stump grinding, fencing. Hedge cutting, garden work

Quotations Free.

Fully Insured.

References available



In the autumn it is always difficult to manage the way that the cattle graze the last of the year's growth on the grassland. Even though the grass may look lush and green, the quality of the pastures lessens as the days grow shorter, bringing less sunshine to help the protein content of the feed.

Because of this we feed either hay or silage to supplement the lower quality grass. As the cattle clear the pastures of grass in readiness for the winter, they often graze well into the fences and hedges surrounding the fields, so we have to be careful they don't find any weak spots so they can try to find out if the grass is any greener on the other side! This means we try to move them frequently onto different fields so that they don't get bored despite the supplementary feed. Wet weather causes us difficulty and mess in taking the extra food to the circular feeders with the tractor making ruts in the field.

We try to keep the cattle out in the fields for as long as possible, whilst trying to meet these challenges. Although we have been feeding them on the concrete yard whilst grazing the fields around the buildings, the fields are becoming badly chewed up by nearly 80 cattle each of whom have four cloven feet.

We have now finally decided to bring them into the buildings for the winter, and this year is about a fortnight earlier than usual, but we can't always farm by the date. It means a lot of preparation work to bed the yards with straw and to open the silage clamp in which they feed, but at least we will know where they are.

David, Dorothy and Chris Mann



Your local, independent supplier



Heating Oil



Aga Cooker Fuel



K+ Premium
Heating Oil



Fuel Tanks



2017
**Gold
Trusted
Service**
★★★★★
feefo

Order your fuel today



www.rix.co.uk



01675 419187



CONTACTING THE UNITED BENEFICE ORGANISATIONS

- Open to all Parishioners

POLICE CONTACT	Norton Lindsey Wolverton Langley	01926 410111 01789 444600 01789 414111
WOLVERTON		
Brownies and Guides	Rachel Livingston	wolvertonguiding@gmail.com
Campion Trust	Rev R Livingston	Wolverton
Parish Council	Kathryn Hollinrake	clerk@wolvertonpc.org.uk
Rainbow Guides	Janet Livingston	wolvertonguiding@gmail.com
Wolverton History Group	Dorothy Mann	01789 731635
Church Hall Bookings	David Stone	01789 731488
NORTON LINDSEY		
Church Room	Marion Austin	01926 842661
Claverdon & District Nursing Fund	Anna Mace-Leska	07816 283973
Cricket Club	Martin Neale	01926 842668
Editor of Parish Magazine	Karin Elmhirst	07923 094513
Gardening Club	Marion Austin	01926 842661
Junior Football Club	Des Davies	01926 498285
Neighbourhood Watch	Anne Cooke	01789 730051
Mothers and Toddlers	Marion Austin	01926 842661
Parish Council Clerk	Jennifer Bendall	01926 843534
Rubbish Friends	Judith Gilmore	01926 842050
Sunday School	Marion Austin	01926 842661
Stilton Sniffers	Tim Landreth	01926 842587
Village Hall 100 Club and Bookings	Carole Briggs	01926 843355
Village Hall Treasurer	Ashley Hollinshead	07980 811192
Women's Institute	Sue Steel	-
LANGLEY		
Amenities Association	Brian Keefe	01926 843812
Claverdon & District Nursing Fund	Linda Hammond Brian Keefe	01926 843415 01926 843812
Parish Council Clerk	Nigel Hewin	01926 842200