

THE PARISH MAGAZINE

WOLVERTON, NORTON LINDSEY AND LANGLEY



JUNE 2020

Price 50p

Rector	Rev Richard Mutter 01789 731475 (day off Friday)	
Church Wardens	Mr Adrian Hopkinson	01926 842422
	Mrs Dorothy Mann	01789 731635
Deputy Church Warden	Mr John Cohen	01926 842751
Treasurer	Mr Jonathan Toulmin	01789 731332
PCC Secretary	Mrs Marion Austin	01926 842661
Editor	Mrs Velma Neale	01926 842668

PLEASE NOTE

ALL CHURCHES ARE CURRENTLY CLOSED

However, if you need to speak to anyone about Baptisms, Weddings & Funerals, please contact: **Churchwardens**

Adrian Hopkinson	01926 842422
Dorothy Mann	01789 731635
John Cohen	01926 842751

PARISH RECORDS

Simon Foster Morgan 4th May Cremation at The Vale, Evesham

REVEREND STIG GRAHAM

As mentioned in last month's magazine, the Rev Stig Graham has agreed to assist the Arden Valley Benefice with worship and pastoral care, although he has prior commitments which may affect his availability on some occasions.

Stig has begun by designing a digital service to be delivered via Zoom. As long as lockdown is in operation the churchwardens have agreed a Benefice-wide Common Worship Morning Prayer Service at 11 am on the 1st, 2nd and 3rd Sundays of the month with BCP Evensong at 6.30 pm on the 4th Sunday of the month.

To "attend" these services contact Celia Spiers **0771 0198009**

NOTE FROM THE EDITOR

I didn't receive any response to my request for further articles, funnies, etc last month, so this month I am going to borrow someone else's idea and suggest that you send me pictures of your gardens – no need to say where it is, unless you want to.

It will give us all something colourful to look at as it will be making best use of the colour spread online again this month, and for a while yet!! And maybe we should think about opening our gardens later on in the year, to raise money for the church???

If anyone has any good ideas for July magazine, please do send them to me. I live in hope!!

I hope you were all able to view the magazine last month. You will have been given the link again this month for the June issue.

I would also like to say a big Thank You to Ken Chapman for his incredible contributions over the past many months. Do take note of his comments at the end of this month's article.

A D MULLAN

PLUMBING, HEATING & SMALL BUILDING WORKS CONTRACTOR

Ardencote, New Road, Norton Lindsey, Warwick, CV35 8JB

Local, reliable and trustworthy plumber & small works contractor with over 30 years' experience

All aspects of building works considered

Quotes supplied **No call out charges**

Contact: Andrew Mullan

Home: 01926 842616

Mobile: 07778 558893

E-Mail: Andrew.mullan@yahoo.co.uk



Established 1985

LIBRARY INFORMATION

This week we wanted to highlight the library's [eMagazine collection](#) which you can access from home with your library card, for free! Here's just a few great titles that are available to read right now:

[BBC Good Food](#)

[Cycling Weekly](#)

[Amateur Photographer](#)

[Empire](#)

[New Scientist](#)

[National Geographic](#)

[The Economist](#)

Lots of us are focusing on hobbies like photography and baking at the moment as well as gardening and cycling so there's plenty here of interest and you can read as many titles as you like!

- As a result of the current COVID-19 outbreak, all Warwickshire Libraries, Community Libraries, Mobile Libraries and the Home Delivery Service remain closed to the public.
- We have extended the loan period for all items currently on loan until the start of July and all fines will be waived. **Please stay safe at home and keep your library items with you.**
- Please keep checking this website for up to date information:

[Poetry on Loan](#) - **West Midlands poetry competition 2020** - open to anyone who lives, studies or works regularly in the West Midlands. This year you can choose to write a poem (or poems) on either of two themes:

The unexpected or ***Vision***. *Vision* is the theme of this year's National Poetry Day (20/20, vision...) and *The unexpected* just seemed like a good idea for a theme at the moment. Find out more [here](#).

warwickshire.gov.uk/libraries



DEADLINE

FOR CONTRIBUTIONS TO THE
JULY 2020
PARISH MAGAZINE IS:

MONDAY 15 JUNE

Articles will NOT be accepted after this date, except with prior arrangement with the Editor

No Time to Iron

Call Sue on 07879 695322 or 01789 205826

Will Collect and Deliver (£2.50 Local Area)
One-Off Loads Welcome!

**£11.00 per hour –
call anytime**



FREE ESTIMATES

Private and Commercial work undertaken
All aspects of interior and exterior decoration covered
including coving and some bravura finishes
References if required

A R Wyatt Painter & Decorator
Quality Painting and decorating

Over 40 years' experience

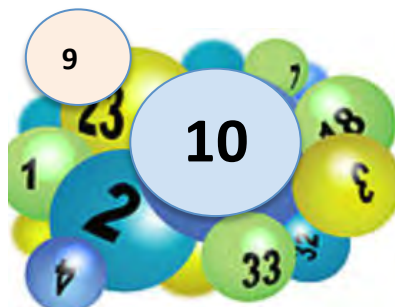
Mobile: 07961 902706

Home: 01926 420612

NORTON LINDSEY VILLAGE HALL 100 CLUB

May Winners

1st Prize	No 10	Karin Elmhirst £75
2nd Prize	No 9	John Mann £25



Carole Briggs

NORTON LINDSEY VILLAGE HALL UPDATE



Not much to say, at the moment as the Hall remains closed due to Covid-19.

As we had planned and ringfenced the finance for finishing off some of the outside, we went ahead and the paving to the front and side has been completed, making the area safer and better looking too.

The Trustees continue to meet by Zoom. A decision has been made to defer the Village Fete until later in the year if possible depending on the situation and in line with Government guidelines.

Anna Mace-Leska, Chair of Trustees and Playing Fields CIO

NEW INN COMMUNITY PUB – NORTON LINDSEY

We hope that you, your families, relatives and friends are all safe and well through these unprecedented times. We as a Committee have been so very humbled by the many, many acts of Community kindness that we've witnessed over the past 2-3 months, and we are not alone across the UK in recognising this 'upside' to the Coronavirus impact.

Danny and Joe have done an amazing job at The New Inn in serving the Community with wonderful takeaways and the 'basic provisions' shop. As more local outlets come on-stream with their own offerings we are now 'tweaking' the takeaway service – please see below for details.

Takeaway Service

Danny and Joe are extending the menu and making it easier to order in advance.

The new menu and prices are below. Takeaways will now be served on the following days:

Thursdays - 5pm to 8pm (orders from 4pm)
Fridays 5pm to 8pm (orders from 4pm)
Saturdays 5pm to 8pm (orders from 4pm)
Sundays 12noon to 3pm (orders from 12noon)

You can order up to 1-2 days in advance (advisable for peak times) and please call Danny to check availability, payment and delivery/collection options on 01926 258411 or 07380 601813. There are also many drinks available.

THE NEW MENUS



MENU	
WEEKDAYS	
Fish and fries	£8
Scampi and fries	£8
Bacon & Cheese burger	£9
Han and mushroom Carbonarra	£8
Faggots, mash and mushy peas	£9
Ham eggs and chips	£8
Mediterranean vegetable wellington & mash	£8



SHOP PRODUCE OFFERING

The shop will continue to provide basic provisions – milk, bread, butter, tea etc.

Please phone Danny with your orders to check what's available and discuss delivery options.

We hope that you stay safe and well through these challenging times and please do not hesitate to contact any one of us if you need help or support

Kind regards

Quentin Hayes, on behalf of The Management Committee
Norton Lindsey Community Pub



NATURE NOTES - LONG GRASS AND WILDFLOWERS

The Wild flower's Song

"I slept in the earth

In the silent night,

I murmured my fear

And I felt delight,

In the morning I went

As rosy as dawn,

To seek for new joy:

But Oh! met with scorn."

William Blake

This charming extract from Blake's poem epitomises what many people feel about wildflowers which they consider to be weeds.

Sadly, all the wildflowers in the verges which I described in last months article have now been cut by the Council. So I am re-submitting this article which I wrote last year in the hopes to inspire you to allow a few wildflowers to grow in your lawns.

Long grass with wildflowers has lots of benefits for wildlife. It is a mini-jungle, moist and sheltered at its base, wildflowers seeds "*sleeping in the earth*" will germinate and flourish producing flowers containing pollen and seeds.

Anyone walking past my home in Snitterfield Lane may have noticed that, for the third year running, I will be leaving my front lawn to grow over the summer.

In this area, the grass is naturally poor as there is much moss which I leave. This poorly growing grass enables the wildflowers to germinate and thrive. No seeds were planted. Naturally in the ground were stitchwort, ox-eye daisies, clover, achillea, self-heal, cat's ear, some dandelions and ragwort. The latter was removed before it flowered.

I was not so successful when attempting to allow 2 small areas of grass to form a natural mini-meadow in the back lawn where the grass was stronger growing. The only wildflowers which emerged were poppies, stitchwort and thistles. The latter were removed as they would take over if let to go to seed. It will take a couple of years to achieve a mini-meadow with the wildflower plug plants which I planted needing a helping hand.

Why is this important and how is this different to planting cultivated plants in the border you may ask. Well its about the mini-jungle effect. Whenever I walked through my mini-meadow, I disturbed into the air, clouds of insects including tiny moths, grasshoppers, small flies, hover-flies, bees and beetles. Some of these would have been laying eggs on the plants and grasses.

All this is food for the birds, bats and hedgehogs. Indeed, it seems that the hogs have returned, albeit in very small numbers, to our area. More on that in my the October article.

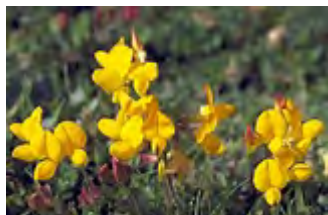
The seeds from these flowers and grasses also provided food for a visiting hen pheasant and her three chicks and it was a delight to see them foraging naturally.

The hen was eating the seeds and the chicks insects, I imagine.

In the back garden the long grass also provided a habitat for frogs which breed in my pond.

I realise I am lucky to have a sizeable garden in which to play with. But anyone can do it, allowing an area as small as a metre square or diameter to grow long, maybe under an old apple tree. You can give it a designed look by keeping the edges sharp and mowed or by making a meandering path if you have a larger garden.

In fact a few of my neighbours in the Lane did exactly this. One neighbour left an area unmown and the tiny daisies and clover proliferated and looked delightful apart from providing pollen.



In another garden, bird's foot trefoil was allowed to flower in the lawn and there was a delightful display of lady's bedstraw on a bank. In the churchyard, orange hawkbit (fox and cubs) was allowed to flower



and in another spot, there were primroses in spring and later



common
mallow and
wild
convolvulus.



All these seeds were there in the ground waiting not just to emerge as plants but also to form flowers and seeds and complete their cycle of life.

Why not have a go at making your own mini-jungle of a meadow and see what plants emerge naturally? That way in amongst the long grass you'll be creating an area not only for the wildflowers which will not be *".....met with scorn"* but welcomed, and the abundance of little moths and other insects to feed the birds, bats and any amphibians which you may have.

It might also be fun to visit each others plots and look to see what emerges in different gardens. It is all experimental so you can mow it off if you don't like the effect but it will all help with the biodiversity in our area.

Anna Mace-Leska



VISITING QUALIFIED CHIROPODIST

Mrs L Hemmings MSSCh, MBChA, DipPodMed

Registered with the Health Professions Council

Tel: 01564 784466

NiCEIC
Domestic Installer - H.J.Cleal

Electrical Services

*Domestic, Industrial,
Agricultural,
Repairs and Installations*

**Tel 01926 315638
and 07816 232108**

**ADVERTISE YOUR BUSINESS
WITH THIS PARISH MAGAZINE**

Do you know anyone who would
like to advertise with us
for as little as £6 for a quarter page
each month?

All proceeds to Church Funds

Email me:
velmahclg@btinternet.com

**or ring me on
01926 842668
or text me on
07753 368098**

NEED HELP WITH THE GARDEN?

Hedges Trimmed
Grass Cut
Garden Tidy Up

NO JOB TOO BIG OR TOO SMALL

Call Nathan 07963 742869



NORTON LINDSEY CRICKET CLUB

It is so disappointing to see the Playing Field in such excellent condition – thanks to the volunteers who have kept it in pristine condition, despite the lack of cricket.

The England and Wales Cricket Board have recently agreed guidelines with the Government for the use of outdoor cricket nets for practice and exercise and so the Club has issued these rules to members and they came into use from Monday 18th May.

Net use is restricted to 2019 Club members and Juniors/parents of 2019 juniors.

Nets can only be used by making a prior booking with Conor Green on 07919 864814 by text, Whatsapp or Messenger before 8pm the day before.

Booking is a government/ECB stipulation. No use without a booking.

Only two users in a single net, unless from the same household. Second net is not to be used.

Social distancing of at least two metres to be maintained at all times (unless participants are from same household).

Each individual user must provide their own equipment and balls. The bowling machine and Club practice balls are not available.

Users must provide their own sanitiser and wash hands at home before and after net use. Use sanitiser/wipes to clean net gates and wickets before and after use.

The Club pavilion and toilets will not be available for use.

Check for symptoms of covid-19 in line with government guidance. If you are symptomatic, living in a household with possible covid-19

infection or if you are classified as extremely vulnerable you should remain at home and follow government guidance.

If you fail to follow these guidelines you will be asked to immediately leave the nets and may be subject to Club disciplinary procedures.

Committee members will be regularly visiting the facility to ensure that rules are being followed.

The local community police officer has also indicated he will be visiting the Playing Field to observe correct use of the facility, in line with government rules.

Let us hope that the relaxation to allow the use of nets is the portent for the start of some sort of cricket before the end of the summer. We have lost our bar income and member subscriptions and match fees for 2020, which represents over 80% of our annual income - unfortunately this has not prevented the bills from turning up!

Martin Neale

LOCAL HISTORY

In 1851, a single-storey, single-bay building with two small outhouses was erected beside the churchyard on the site of the vicarage. It was rented to Mrs Sarah Taylor and her young daughter. The vicar and churchwardens gave their blessing to Mrs Taylor's proposal to open a dame school in her home. It appears that her establishment was a classic example of a dame school because Theodore Shurt tells us that she:

***"knew but little: little had to teach
But famed for discipline was she and curb'd
Tumultuous passions in the youthful breast".***

Sarah Taylor suffered from cancer in the last three years of her life and her daughter, who suffered from tuberculosis, had to run the school for the last few months in 1868, when her mother died. The daughter moved to Leamington Spa and the day school was suspended. The Sunday School moved into the premises from the church. It was run by Helen Hortin and John Fessey who was the nephew of Robert Cowper of Blacon Farm. They also formed a children's choir and practised there. John Fessey also reopened the dame school in the early 1870's and also started a night school there in 1870. The wife of Thomas Smith, gentleman, who lived at Rainbow Cottage took over the dame school until the opening of Wolverton and Norton Lindsey Board School in 1876 rendered it redundant. She charged two pence a week for her tuition of mainly 5-8 years old children. During this period, the vicar, Rev Kempson, threatened to close the dame school if it was not supported and to build a new vicarage on the site, incorporating the building into the vicarage.

After 1876, the Church Room became a venue for village gatherings over a cup of coffee and was known for a short time as the Coffee Room. In 1878, the Norton Lindsey Men's Recreation Club was formed and the room became a retreat for villagers to enjoy a game of bagatelle, cards, dominoes or a game of billiards on a ¼ size table. It used to open three days a week in the 1880's and 1890's. An extension was added on the west side in 1886 in memory of Mrs Ellen Kempson. The room accommodated many happy gatherings in the late 19th and early 20th

centuries. Harvest Home suppers were very popular where, after the church harvest festival, the whole congregation sat down to a sumptuous feast and smoking concert, last held in 1892. Recreation Club suppers and Cricket Club suppers were also enjoyed there for a time. In the late 19th and early 20th centuries, about twenty village men would gather for the Men's Recreation Club meetings. In 1912, the original ¼ size billiard table was replaced by a ¾ size table fetched from Sutton Coldfield by C S Barrett and his horse and cart. To get it into the room, a central pillar that had supported the original roof since the demolition of the west wall and addition of extension was replaced by an iron girder from north to south walls. The first whist drive was held in 1909 by Mrs Blakeman midst widespread predictions of disaster which proved to be unfounded. Subsequently, Harry Troth ran many whist drives there.

The first Norton Lindsey Women's Institute branch was formed about 1921 and obtained the vicar's permission to hold meetings in the Church Room, which they did until 1938 when the branch was suspended. The annual vestry meetings were held in the church room for many years. Village children took great delight in watching villagers come out from the meeting to determine who had been elected as churchwarden by studying expressions on faces and the order in which individuals emerged! A lending library was started in the 1920's using books donated by H A Spence. Winnie Castle ran the Spence Library. This was superseded by the Carnegie Library run by Mrs Heler initially followed by Mrs Lewis. The Parish Council from its inception used it for its meetings. Over the years, the Men's Club membership declined as the village population dwindled in the first half of the 1900's until the early 1980's when it was used by the five surviving members meeting on Friday evenings. The Men's Club formally dissolved in 1989.

The contents of the room were sold at auction raising in excess of £1000 and the proceeds were donated to the church. In 1990, the room was modernised and refurbished by the laying of a sewer connection and piped water supply, the creation of a kitchen, toilet and internal store, rewiring for electricity and installation of new heaters, together with a new floor and damp course. The total cost was over £9000 of which villagers' fund raising initiatives such as the Sunday School's mile of pennies, jumble sale, churchyard tours and teas, antiques supper, craft fair and coffee morning raised over £5000. Subsequent fund raising provided new chairs and tables. The Rector and Parochial Church Council have

complete control of the Church Room delegated to a committee, the members of which are elected annually, which has continued to maintain and enhance the facilities.

This is my last monthly local history article for the Parish Magazine. If I acquire interesting information in future from descendants of old villagers or if I am asked a specific question of general interest, I shall contribute an ad hoc article.

Ken Chapman

NORTON LINDSEY PARISH COUNCIL



Norton Lindsey Parish Council has been made aware of several recent instances where drones have been spotted flying over private gardens in the Parish, much closer to the residents than the permitted 50m.

We would ask that all drone operators adhere to the Drone Code as issued by the UK Civil Aviation Authority. Parents, please ensure that if your children are operating drones they too have passed the drone test and registered with the CAA before they fly.

The Drone Code can be viewed on the Dronesafe website.

Further information is available from:

Dronesafe: <https://dronesafe.uk/>

CAA: <https://register-drones.caa.co.uk/>

Thank you.

Norton Lindsey Parish Council

The Norton Lindsey **Stilton Sniffers**

The Sniffers are continuing to meet using the magic of the internet, with the majority of our number being able to assemble the necessary technology to show their presence!

Our meetings have focussed on upcoming events and how we might replace them should they not be able to go ahead, obviously the situation will change as new guidelines are drawn up. Rest assured that the Sniffers are ready to respond to any changes as soon as they are made.

We are looking at organising some virtual fundraisers, particularly for the causes that we support through our Golf Day (which is currently pencilled in for 3rd September). The Shakespeare Hospice and The Welcombe Hills School, so watch this space! (as well as our Facebook page and website).

We are all looking forward to a return to a new "Normal" and hope to get as many people as possible together in the near future for what I have previously described as a "humdinger"

Best wishes

Tim, and all the Sniffers!

FURNITURE RESTORATION

Antique and Modern Furniture Restored

by Craftsman Charles Barnett
in Stratford-upon-Avon

- French & Wax Polishing
- Desks Re-Leathered
- Brass Polishing
- Furniture Stripped
- Locks opened & keys cut
- Insurance work a speciality
- Modern Spray Finishing

Established 1975

Home: 01 789 266469

Mobile: 07792 423343

Email chasbar@onetel.com

COUNTY COUNCILLOR REPORT FOR JUNE 2020

I delayed writing this note until the Prime Minister had spoken to us on May 10. I was pleased to hear that the Covid-19 epidemic is now receding and we can start to return slowly to everyday life. I hope that by the time you read this report our schools and nurseries will be preparing to return to work and shops will be preparing for opening their doors.

Recycling sites opened up on May 18, but at reduced capacity and only through booking in advance. To book call 01926 842068 or book directly on the county council web site.

I thought it was a great shame that we were unable to remember VE day on its 75th. Anniversary with community celebrations. I hope everyone was able to hold the 2 minute silence in the morning and then toasted victory at 3pm as an act of national celebration. We also added an additional toast to thank all the volunteers who have come forward during this epidemic to support all those who are unable to visit shops.

The County Council compiles data on the progress of the epidemic broken down by district and at May 2 94 people in Stratford on Avon District area had had Covid-19 listed as the cause of death since the start of the epidemic in UK. The records show that 0.27% of SoADC population have been sick enough to see a doctor with Covid-19 symptoms. Only 2 people died at home and the 52 died in hospital and 40 died in care homes. This is 0.074% of the population.

SoADC numbers for deaths are slightly higher than the all age national average but given our district has a significantly higher average age than the rest of the country it is lower than might be expected for our age profile and the way Covid-19 attacks older people.

The County Council continues to distribute food parcels to those the NHS has identified as sheltered residents and by May 1 it had delivered 5,000 parcels.

The Government has announced an increase in funding for small businesses and this fund has been set up to accommodate certain small businesses outside the scope of the current schemes. It is aimed at small businesses with fixed property-related costs. Local authorities are

being asked to prioritise businesses in shared spaces, regular market traders, small charity properties and bed & breakfasts that pay council tax rather than business rates. However, local authorities may choose to make payments to other small businesses based on local economic need.

John Horner
Tel. 01926 842068

Dog Walking and Pet Feeding Service

Norton Lindsey and surrounding villages



As well as offering a dog walking service, I can also visit your pets in your own home to feed them, clean them out or even just keep them company for an hour or so if you're going on holiday, or having a long day or weekend away.

Please feel free to give me a call to discuss your needs.

Fully insured, references available



*Walk The Dog
and feed the cat, too!*

Jenny Bendall

7 Brick Kiln Close, Norton Lindsey, Warwick, CV35 8DL

Tel: 01926 843534 / 07814 239244

Email: walkdog-feedcat@outlook.com

PAW SITIVE Results

Specialising in canine muscular therapy, behaviour and training

Treating dogs suffering from:

Arthritis; Lameness; Joint Pain; Post-Operative recuperation;
Muscular Issues; Behaviour and training problems

We also work with sporting and working dogs, offering muscle balance assessments, massage treatments and pre and post activity and training advice

Regular canine first aid and behaviour/muscle therapy workshops

Contact: 07538 818685 or caroline.tunbridge@caninetherapy.co.uk
www.pawsitive-results.co.uk



NORTON LINDSEY PARISH COUNCIL REPORT

Norton Lindsey Parish Council met in virtual mode on Tuesday 26th May, and the first item on the agenda was to approve the protocol for the use of Zoom technology, in accordance with government approved regulations for parish councils.

The Clerk confirmed that the new policy for annual grants to local organisations had been sent to all previous recipients and that due to the abnormal circumstances this year, there would be only one application deadline - namely, 31st January 2021. The new policy and application form are available on the PC's website - www.nortonlindseypc.org.

The on-going issue with the parish dog bins meanders on! The District Council has emphasised that dog waste can be deposited in general litter bins and so the Clerk is going to see if WDC will re-allocate our permitted two bins to Canada Lane and the Millennium Green and whether they would be prepared to empty the bin at the pedestrian entrance to the Playing Field at our cost. The dog waste bin at the vehicular entrance to the Playing Field would be removed as there is a general litter bin nearby.

The farmer who rents Church Furlong fields has locked the gate entrance off Canada Lane as this is only a "permissive" path with no legal rights of use. Dog walkers depositing waste on the gate has led to this situation. Irresponsible dog owners have much to answer for! It was agreed to let this issue rest for the time being.

The PC's report that a hedge appears to have been removed at Horsley Farm after WDC had refused permission, even after appeal, has been caught up in the Covid-19 backlog, but the matter has been referred to WCC's Ecology department.

Under Highways matters, it was noted that the water running across the Warwick Road appeared to have ceased. Whether this was due to ditch clearance or the dry weather would be become apparent in due course. There had been a partial repair of potholes on passing places on Dark Lane, but similar problems existed on Norton Curlieu Lane and

Brittons Lane. It would appear that WCC did not have the finance or the priority to permanently repair these hazards on single track minor roads. There was a missing Give Way sign on Curlieu Lane approaching Henley Road and the Farm Vehicles sign on Snitterfield Lane had been turned through 180 degrees in recent high winds. The pavement on Red Horse corner had been re-tarmaced and the tripping hazard had been resolved. Cllr. Caborn (WCC) indicated a final plan for drainage on Norton Curlieu Lane had been submitted to residents. Fly tipping incidents along Norton Curlieu Lane had been dealt with by WDC. NLPC had published advisory notices with regard to the use of drones following complaints with regard to low flying.

The PC had sought 3 quotes with regard to the renewal of its insurance policy and it was agreed to remain with Ageas, who were significantly cheaper than the other quotes.

Under Planning matters the Council noted that WDC had approved the road access plan to the proposal to build 12 affordable houses off Curlieu Lane. This was a minor part of the overall proposal as the splayed road access crosses a small area in WDC district. The Clerk was asked to correspond with both Stratford upon Avon and Warwick District Councils with regard to the delay in deciding the planning applications for Curlieu Lane housing and the poultry farm, respectively, seeking a status report.

Cllr Caborn reported that WCC departments were all working remotely, with both the country parks and the recycling tips now open for entry by appointment. WCC also had plenty of PPE equipment in stock for their care homes and were still awaiting the government's allocation of £7.7m additional funding for this sector.

It was agreed that the next PC meetings (probably "virtual" meetings) would be held on the 7th and 14th July as this was necessary to deal with signing off of the 2019/20 Annual Governance and Accountability Return in accordance with government regulations.

(Please note the Parish Council Report is a summary of the meeting minutes. The full minutes are available on the Norton Lindsey Parish Council website [www.nortonlindseypc.org] or from the Clerk).

L. Brooke Joynson
Cabinet Maker & Joiner

All aspects of woodworking undertaken

General Joinery & Carpentry
Antiques & Architectural Antiques
Furniture Restoration
Wooden floors supplied and fitted

Call 01926 842547 or 07909 901989



**Happy
Feet**

Registered
Foot Care
Specialist



- Toe nail cut
- Corns
- Verrucas
- Ingrown toe nails
- Hard dry skin
- Fungal nails

Home appointments
07842 266575

www.happyfeetmidlands.com

**BURTON FARM, STRATFORD ON AVON
& PRINCES DRIVE, LEAMINGTON SPA
RECYCLING CENTRES**

Restricted re-opening

You can now book appointments to visit these recycling centres. The slots are only for essential visits, with one visit per fortnight. Please carefully read the information in the booking process.

This site currently has limited availability. If you are unable to book a time slot, check again tomorrow.

Cars that turn up on the day without a booking will be turned away.

Check the website for the latest information
<https://www.warwickshire.gov.uk/contactusrecyclingandwaste>

RECIPE – RHUBARB AND CLEMENTINE COMPOTE

INGREDIENTS

1 level tbsp. golden caster sugar
7oz rhubarb trimmed and cut into 2" lengths
2 clementines – peeled and each cut into 4 slices
Biscuits to serve

METHOD

Put the sugar into the frying pan and spread the rhubarb over it and add the clementine slices

Cook over a medium heat for 3-4 minutes, shaking the pan occasionally until the fruit has softened

Take the fruit out of the pan with a slotted spoon and divide between 4 dishes

Bring the juice to the boil and reduce to a syrup.

Pour the syrup over the fruit and serve warm or cooled.

ITEMS FOR SALE

Gardens are “done” and lockdown is giving us all the perfect chance to Spring Clean and declutter the house!!

Why not advertise in this magazine for a small donation to VERY MUCH NEEDED church funds???



**Sell your unwanted items in the Parish Magazine
we reach approximately 350 houses in the area!**

Email velmahclg@btinternet.com
or ring 01926 842668

NORTON LINDSEY WI



Cancelled

**WI MEETING on Wednesday,
10th June 2020
Norton Lindsey Village Hall**

Norton Lindsey WI are unable to meet up at present but we're keeping in touch with members and planning for when the social distancing restrictions are lifted. In the meantime, they say that a picture speaks a thousand words, so this will give you an idea of what Norton Lindsey WI members enjoyed together during 2019.

If you want to be part of our success story, please contact us secretary@nlwi.org.uk







Take care and stay alert everyone. Protect our NHS who continue to provide an outstanding service to us all. Thank you.



To find out more, check out our website: www.nlwi.org.uk or visit our Facebook page.

Sue Steel



GN FORESTRY SERVICES

Glen Nicholds

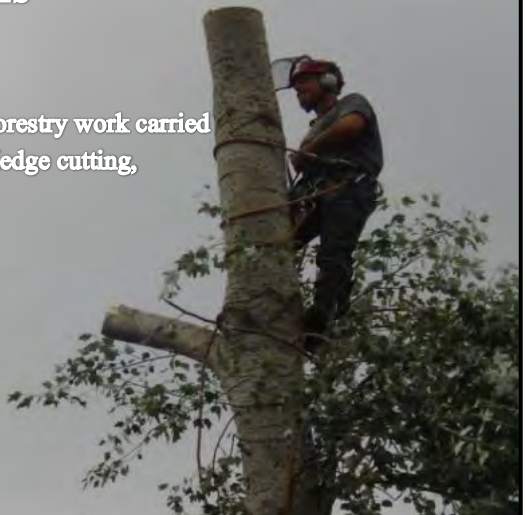
Mob : 07802 839885

All aspects of tree surgery and forestry work carried out. Stump grinding, fencing. Hedge cutting, garden work

Quotations Free.

Fully Insured.

References available



MANOR FARM WOLVERTON DIARY

Despite all the tragedy of corona virus, it is obvious that Mother Nature does not conform to lockdowns. The period of confinement coincides exactly with our busiest time of the year following the very wet winter.

The cows started to calve in the middle of March, and we had 30 cows in thirty days, necessitating 18 hours a day surveillance on the maternity ward. Fortunately, all except one calved naturally, with that one needing only a steady pull of assistance. After this good start we have had a couple of problems in the last two weeks. One of the older calves started to go bald, which the vet diagnosed as an allergy to sunlight, something I had not seen for over 35 years. The vet said it was quite common in herds of Limousin cattle, which is not the breed of our herd. It turned out that the calf's mother is a 16-year-old crossbred Limousin, but we have never had this problem before. The only cure is to keep the calf inside for a while and to hope he grows out of his allergy.

Another cow had a calf which had both his front legs knuckled under, usually caused by poor presentation in the womb. Normally they soon grow straight but he was having difficulty feeding from his mother, so we had to assist. His mother was not too happy with our help, but, after three days, he finally managed to feed himself, and his legs are now almost normal. We have had to cut some fresh grass to feed both cows and calves manually, another job!

On the arable side, most of the crops have germinated well, but all are desperately in need of a few rainy days to perk them up. Are we ever satisfied with the weather?

One amusing story to come out of the present crisis, Virgin Airways have decided to drop beef from in flight meals because of the emissions from cattle! Hypocrites or what?

David, Dorothy and Chris Mann



Your local, independent supplier



Heating Oil



Aga Cooker Fuel



K+ Premium
Heating Oil



Fuel Tanks



Order your fuel today



www.rix.co.uk



01675 419187



CONTACTING THE UNITED BENEFICE ORGANISATIONS - Open to all Parishioners

POLICE CONTACT	Norton Lindsey Wolverton Langley	01926 410111 01789 444600 01789 414111
WOLVERTON		
Brownies and Guides	Rachel Livingston	wolvertonguiding@gmail.com
Campion Trust	Rev R Livingston	Wolverton
Parish Council	Kathryn Hollinrake	clerk@wolvertonpc.org.uk
Rainbow Guides	Janet Livingston	wolvertonguiding@gmail.com
Wolverton History Group	Dorothy Mann	01789 731635
Church Hall Bookings	David Stone	01789 731488
NORTON LINDSEY		
Church Room	Marion Austin	01926 842661
Claverdon & District Nursing Fund	Anna Mace-Leska	07816 283973
Cricket Club	Martin Neale	01926 842668
Editor of Parish Magazine	Velma Neale	01926 842668
Gardening Club	Marion Austin	01926 842661
Junior Football Club	Des Davies	01926 498285
Neighbourhood Watch	Anne Cooke	01789 730051
Mothers and Toddlers	Marion Austin	01926 842661
Parish Council Clerk	Jennifer Bendall	01926 843534
Rubbish Friends	Judith Gilmore	01926 842050
Sunday School	Marion Austin	01926 842661
Stilton Sniffers	Tim Landreth	01926 842587
Village Hall 100 Club and Bookings	Carole Briggs	01926 843355
Village Hall Treasurer	Ashley Hollinshead	07980 811192
Women's Institute	Sue Steel	-
LANGLEY		
Amenities Association	Brian Keefe	01926 843812
Claverdon & District Nursing Fund	Linda Hammond Brian Keefe	01926 843415 01926 843812
Parish Council Clerk	Nigel Hewin	01926 842200